



SLIMCART™

MOBILE DOCUMENTATION CART



SlimCart™

Mobile Documentation Cart

The non-powered, ultra-lightweight SlimCart™ provides a flexible, cost-effective solution for clinical documentation in any healthcare environment. Its compact profile allows for simple mobility in hallways, through doorways, and in and around a patient's room. The SlimCart™ offers a generous work surface with a bi-directional slide-out mouse surface, and is configurable with your choice of laptop, tablet or lightweight monitor. Add optional key-locking drawers and convenience accessories to support your facility's EHR documentation at the point-of-care.



SlimCart™ offers an ultra-lightweight, compact solution for clinical documentation in a host of healthcare environments.



- Hospital/Acute Care
- Surgery Centers
- Extended Care/Nursing Homes
- Animal Health Facilities
- Dental Clinics
- Physician's Office
- Education Simulation
- Rehab Facilities

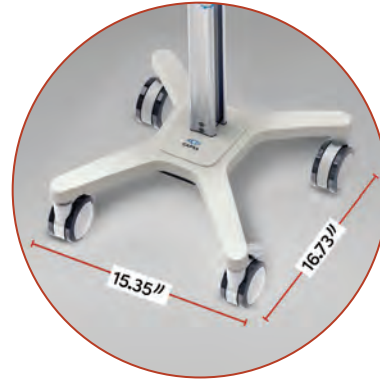


SlimCart™

The Easy Choice for Clinical Documentation



Ultra-lightweight,
starting at just
27 pounds!



Slim Profile

Compact size
maneuvers
easily through
tight spaces



Ergonomic Adjustment

Simple height
adjustment to
accommodate
standing or
seated use



Storage Drawers

Optional single
or dual locking
drawers for
efficient and
secure storage

General Specifications

| | |
|---|-------------------------|
| Starting Weight: | 27 lbs |
| Height Range: | 33.25" to 49.5" |
| Adjustment Range: | 16.25" |
| Footprint (width front to rear): | 15.35-16.02"W x 16.73"D |
| Work Surface - Work Area: | 14.52"W x 12.35"D |
| Work Surface - Outer Dimensions: | 17.28"W x 20.39"D |

| | |
|---------------------------------|------------------------------|
| Drawer-Inner Dimensions: | 9.6" W x 8"-10.8" D x 2.7" H |
| Casters: | 4" (front locking) |
| Lift Type: | Manual Assisted |
| Display Max Weight: | 8 lbs |
| Warranty: | 3 years, parts only |



SlimCart™

Flexible Configurations

Every facility's mobile documentation needs are different. That's why the SlimCart™ is designed to be flexible and easily configured to suit your technology and clinical workflow requirements.



Laptop Configuration



Technology Secured

Secure your laptop with an optional security bar



Flex Arm

Tablet Configuration



Secure Tablet Mounts

Locking tablet mounts secure a range of tablet sizes



Monitor Configuration



Computing Flexibility

Supports lightweight monitors weighing up to 8 lbs

Storage Options



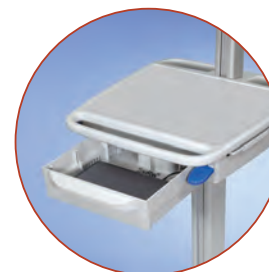
Single Drawer

Single key-locking removable drawer with drawer dividers



Double Drawer

Dual key-locking removable drawers with drawer dividers



Single Technology Drawer

Single key-locking removable drawer for secure ventilated storage of technology or battery packs



SlimCart™

Accessories

The SlimCart™ mobile documentation cart is designed to accept a wide variety of accessories to facilitate your workflow and organization.



Removable Bins



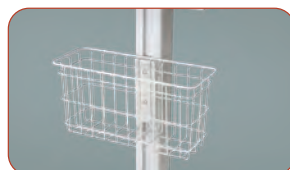
Laptop Security Bar



Scanner Holder



Power/CPU Holder



Wire Basket



Scanner Shelf



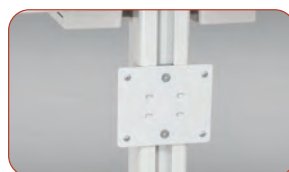
Blank Cover Plates



Scanner Mount Plate



PDI Mount



CaviWipe Mount



Non-Apple Devices



For Apple Devices

Check with your Capsa Healthcare regional sales manager about these and other accessories specific to your desired solution

Monitor and Tablet Mount Options



Tilt Swivel Monitor Mount

Supports lightweight monitors up to 8 lbs. 180 degree side-to-side swivel and tilt of 30 degrees up and 5 degrees down.



Medium Key-Lock Tablet Holder

Supports 8.5"-11.5" tablets weighing up to 5.5 lbs and in thicknesses between .28"-.41".



Large Key-Lock Tablet Holder

Supports 11.5"-14" tablets weighing up to 5.5 lbs and in thicknesses between .28"-.41".



VESA Secure Tablet Holder

Supports 6.5"-8.5" tablets in thicknesses up to .36". Security-screw locking, for use with VESA mount.



Medium Clip-In Tablet Holder

Supports 8.5"-11.5" tablets/cases weighing up to 4 lbs and in thicknesses up to 1". Non-locking, compatible with flexible arm.



Large Clip-In Tablet Holder

Supports 11.5"-14" tablets/cases weighing up to 4 lbs and in thicknesses up to 1". Non-locking, compatible with flexible arm.

Elevating performance,
every day.



Certified ISO
27001:2013



Certified ISO
9001:2015



CAPSAHEALTHCARE

CapsaHealthcare.com | 800.437.6633

8170 Dove Parkway
Canal Winchester, OH 43110